



# WELCOME TO COMMUNITY

– UNITED METHODIST CHURCH

ELM GROVE, WISCONSIN EST: 1949

**Sunday Service**  
**May 12, 2024**

Children and families are invited to the Grace Space at the front of the church for an enhanced worship experience.

\*Indicates to stand as you are able.

Words in bold invite a community response.

Assistive listening devices and large print hymnals are available. An usher will happily assist you.

How do you think God's will is revealed to us today? Are there others you want to invite to be a part of your team of support?

## Gathering Music

*On Wings of Song*  
Randy Bryant

Felix Mendelssohn

## Welcome and Greeting

### \*Call to Worship

Happy are those who delight in God's teaching!

**We meditate on them day and night.**

You are like trees planted by streams of water.

**We worship the One who brings forth new life!**

### \*Hymn

*God the Spirit, Guide and Guardian*

UMH #648

### \*Opening Prayer

Loving God, thank you for claiming us as your own and guiding our path this day. Though you call us to delight in your teachings, we can become cynical and full of doubt. Do not judge us, we pray, but restore us to you. Guard and protect us, that we may be open to the possibility that we are being chosen to be new disciples with new ministries that reach our neighbors. In Jesus' name we pray. Amen.

## Special Music

*Glad Adoration*  
Clarion Bells

arr. Kevin McChesney

## Prayer for Illumination

**May the reading of your Word strengthen our spirits and guide us in truth and joy, O God. Amen.**

## Scripture

Acts 1:15-17, 21-26

The Word of God for the people of God.

**Thanks be to God!**

## Message

*Choosing Your Team*

### \*Hymn

*Be Still, My Soul*

UMH #534

## Prayers of the People

### The Lord's Prayer

Our Father who art in heaven, hallowed be thy name, thy kingdom come, thy will be done, on earth as it is in heaven. Give us this day our daily bread and forgive us our trespasses as we forgive those who trespass against us. Lead us not into temptation, but deliver us from evil. For thine is the kingdom, and the power, and the glory, forever. Amen.

### Special Music

*O Waly Waly*

arr. John Behnke

### Ministry Moment

### Invitation to the Offering

God invites us to share our hearts through the practical offerings of money and time. We bring our gifts as a sign of our love for God and the world.

### Offertory

*Pastorale for Mother's Day*

Robert A. Roesch

### \*Offering Response

*What Gift Can We Bring*

UMH #87, vs. 4

### \*Prayer of Dedication

Christ, you have already made God known to us. Help us to live deeply in the knowledge that we belong to God. We offer these gifts, asking that they be blessed and used in God's service to the world. Amen.

### \*Hymn

*Blessed Assurance*

UMH #369

### \*Blessing and Sending Forth

### \*Postlude

*Cortege*

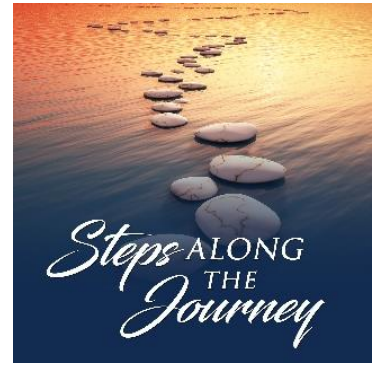
Gordon Young

You are invited to join us for fellowship and refreshments at The Connection!

*Thank you to Tyler Walters for being our cantor this morning.*

## JOURNEY GROUP TODAY:

This week we will have a quick summary (two weeks of work reduced to a one-hour recap) of the recently completed General Conference of the United Methodist Church held in Charlotte, NC. We will discuss “the three R’s” as well as disaffiliation and reaffiliation, church court decisions, clergy retirement plans, apologies, a reduction in the number of bishops in the US and money matters. We hope you will be able to join us at 10:45 in the Disciple Room.



### Fun Sewing Project for May

Please consider joining our friendly group of seamstresses as we embark on a new project. An assisted living home has asked us to provide handmade playing card holders for use by the elderly and handicapped. We look forward to taking on this challenge on Wednesday, May 15 at 10:00 am in the Disciple room. Directions and supplies will be provided.

## QUARTERLY MISSION FOCUS: Love Your Neighbor April, May & June Eras Senior Network

Our second quarter mission partner is Eras Senior Network, serving Milwaukee and Waukesha Counties. Eras' mission is to engage and support seniors, adults with disabilities and family caregivers in leading meaningful lives. Eras' programs reduce isolation for seniors and mobilize volunteers of all ages to make important contributions to community needs. Eras is the result of a successful 2007 merger between the Retired & Senior Volunteer Program of Waukesha Co. and Interfaith Caregiving Network. Clients in Milwaukee County are residents age 60 years and over. Clients in Waukesha County are residents age 60 years and over or age 18 and over with a disability. For more information, please visit: <https://eras.org>.



The food pantry of **Rooted & Rising: Washington Park (formerly UMCS)** is requesting these “suggested” items for May. Thank you for your donations!

- breakfast items (cereal, pancake mix, oatmeal)
- hygiene items
- cooking oil
- flour & sugar

*Community United Methodist Church is building a community of people who love God and neighbor through a focus on Intergenerational Community Service and Overall Health and Wellbeing.*

## **Weekly Happenings**

### **Sunday – May 12<sup>th</sup>**

- Sunday Service – 9:30am – Sanctuary (Communion & Baptism)
- Connection – 10:30am – Revelation Room
- Journey Class – 10:45am – Disciple Room

### **Monday – May 13<sup>th</sup> (Pastor Kris' Sabbath)**

- OWLS Board Meeting – 10:00am – Disciple Room
- AA Group – 8:00pm – Fellowship Hall

### **Tuesday – May 14<sup>th</sup>**

- Stephen Ministry Meeting – 9:00am – Disciple Room
- Praise Team/Contemporary Rehearsal – 7:30pm – Sanctuary

### **Wednesday – May 15<sup>th</sup>**

- Breakfast Fellowship – 7:30am – OFF SITE – Panera at Ruby Isle
- Sew Together Group – 10:00am – Disciple Room
- Chancel Choir Rehearsal – 7:30pm – Sanctuary

### **Thursday, May 16<sup>th</sup>**

- OWLS Luncheon & Program – 11:30am – Fellowship Hall
- SLT Meeting – 7:00pm – Zoom Meeting
- AA Group Meeting – 8:00pm – Disciple Room

### **Friday – April May 17<sup>th</sup> (Pastor Bridget's Sabbath) – Welcome Word Deadline**

### **Saturday – May 18<sup>th</sup>**

- Blood Drive – 9:00am-1:00pm – Fellowship Hall

### **Sunday – May 19<sup>th</sup>**

- Sunday Service – 9:30am – Sanctuary
- Connection – 10:30am – Revelation Room
- Journey Class – 10:45am – Disciple Room

## **SERVANT LEADERSHIP TEAM**

Tom Twinem; Dean Johnson; Christian Fuller; Katy Wilson; Don Down;  
Sheryl Cavan; Jeff Turmel, Justin Forbes; Tom Connor

## **CHURCH STAFF**

Pastors: Rev. Kris Androsky & Rev. Bridget Case  
Office: Chriss Stump – Office Administrator; Deb Cornell – Secretary  
Music: Danielle Bridges – Director of Music; Tyler Walters – Praise Team;  
Susan Krechel & Randy Bryant – Organists